

**GENERAL NOTES**

- A. FIRE BARRIERS - OBC 717.5.2 EXCEPTION 3 / FIRE PARTITIONS - OBC 717.5.4 EXCEPTION 4  
 FIRE DAMPERS ARE NOT REQUIRED UNLESS SHOWN ON FLOOR PLANS OR SCHEMATICS AT PENETRATIONS OF FIRE BARRIERS WHERE SUCH WALLS ARE PENETRATED BY DUCTED HVAC SYSTEMS. HAVING A REQUIRED FIRE RESISTANCE RATING OF 1 HOUR OR LESS IN AREAS OTHER THAN GROUP H AND ARE IN BUILDINGS EQUIPPED THROUGHOUT WITH AN AUTOMATIC SPRINKLER SYSTEM IN ACCORDANCE WITH SECTION 903.3.1.1 OR 903.1.2. HVAC SYSTEM SHALL BE CONSTRUCTED OF SHEET STEEL NOT LESS THAN 26 GAUGE. FLEXIBLE AIR CONNECTORS SHALL NOT BE PROHIBITED IN FULLY DUCTED SYSTEMS AT AIR HANDLING EQUIPMENT CONNECTIONS AND AT AIR CONNECTORS INSTALLATION TO CONNECT METAL DUCT TO A CEILING DIFFUSER AND IS LOCATED ENTIRELY WITHIN THE SAME ROOM AS THE CEILING DIFFUSER. THE FLEXIBLE AIR CONNECTOR SHALL NOT PASS THROUGH ANY WALLS, FLOORS, OR CEILINGS.
- B. SHAFT ENCLOSURES - OBC 717.5.3 EXCEPTION 6  
 SMOKE DAMPERS ARE NOT REQUIRED UNLESS SHOWN ON FLOOR PLANS OR SCHEMATICS AT PENETRATIONS OF RATED SHAFT ENCLOSURES WHERE THE BUILDING IS EQUIPPED THROUGHOUT WITH AN AUTOMATIC SPRINKLER SYSTEM IN ACCORDANCE WITH SECTION 903.3.1.1.

**PLAN NOTES**

- 1. CONNECT & SUPPLY AIR DUCTWORK TO SOUND BOOTH. REFER TO MANUFACTURER'S CUTSHEETS. BALANCE TO CFM INDICATED.
- 2. ROUND DUCTWORK SERVING ROOM SHALL BE LOCATED BELOW BOTTOM OF SHAFT ENCLOSURE ABOVE CEILING AND SHALL NOT REQUIRE DAMPERS.
- 3. DIGITAL ROOM PRESSURE MONITOR ON WALL. THRU-THE-WALL ROOM PRESSURE SENSORS SHALL BE MOUNTED ABOVE THE DOOR. INSTALL PER MANUFACTURER'S RECOMMENDATIONS. ROOM PRESSURE MONITOR SHALL BE PROVIDED BY ATC AND PROGRAMMED TO ALARM IF THE ISOLATION ROOM DROPS BELOW 0.01" NEGATIVE PRESSURE WITH RESPECT TO CORRIDOR.
- 4. DRIP COOLING CONDENSATE DRAIN TO BELOW SINK. COORDINATE TE-IN TO SANITARY WITH PLUMBING CONTRACTOR. PROVIDE AIR GAP AT CONNECTION.

**1 FIRST FLOOR PLAN - HVAC**  
 SCALE: 1/8" = 1'-0"

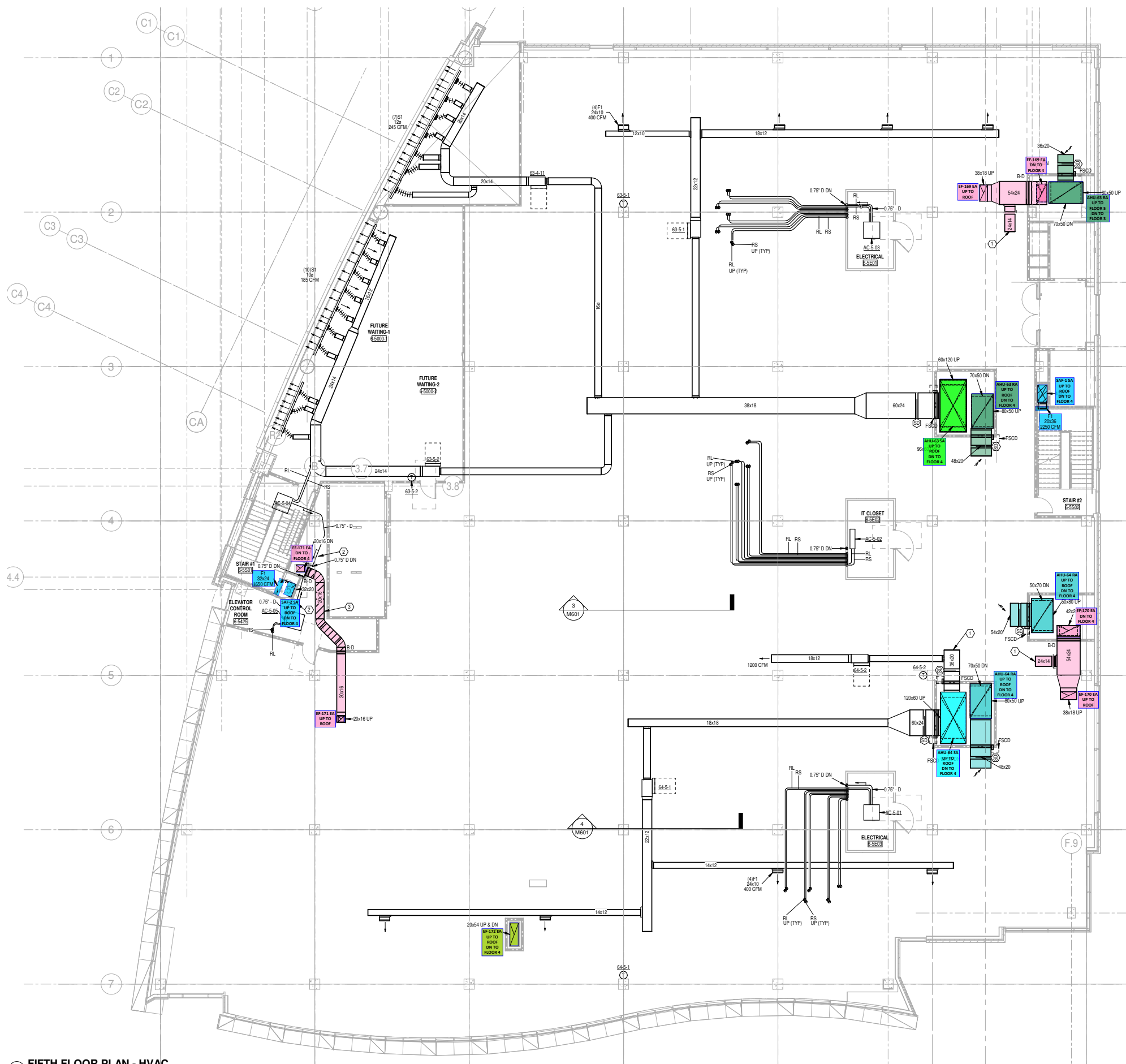




1 SECOND FLOOR PLAN - HVAC  
SCALE: 1/8" = 1'-0"







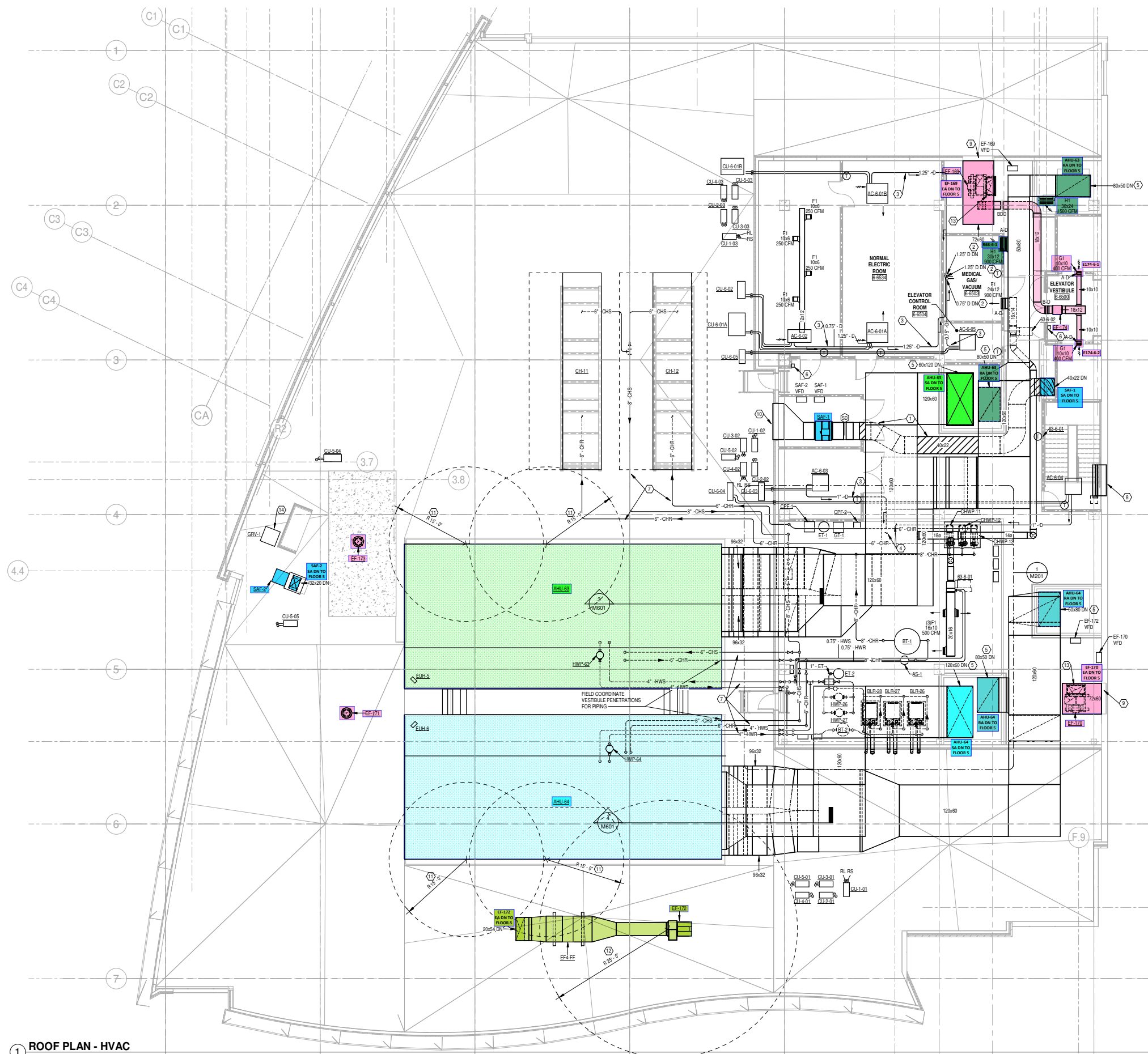
**GENERAL NOTES**

- A. FIRE BARRIERS - OBC 717.5.2 EXCEPTION 3 / FIRE PARTITIONS - OBC 717.5.4 EXCEPTION 4
- FIRE DAMPERS ARE NOT REQUIRED (UNLESS SHOWN ON FLOOR PLANS OR SCHEMATICS) AT PENETRATIONS OF FIRE BARRIERS WHERE SUCH WALLS ARE PENETRATED BY DUCTED HVAC SYSTEMS, HAVING A REQUIRED FIRE RESISTANCE RATING OF 1 HOUR OR LESS IN AREAS OTHER THAN GROUP H AND ARE IN BUILDINGS EQUIPPED THROUGHOUT WITH AN AUTOMATIC SPRINKLER SYSTEM IN ACCORDANCE WITH SECTION 903.3.1.1 OR 903.1.2. HVAC SYSTEM SHALL BE CONSTRUCTED OF SHEET STEEL, NOT LESS THAN 26 GAUGE. FLEXIBLE AIR CONNECTORS SHALL NOT BE PROHIBITED IN FULLY DUCTED SYSTEMS AT AIR HANDLING EQUIPMENT CONNECTIONS AND AT AIR CONNECTORS INSTALLATION TO CONNECT METAL DUCT TO A CEILING DIFFUSER AND IS LOCATED ENTIRELY WITHIN THE SAME ROOM AS THE CEILING DIFFUSER. THE FLEXIBLE AIR CONNECTOR SHALL NOT PASS THROUGH ANY WALLS, FLOORS, OR CEILING.
- B. SHAFT ENCLOSURES - OBC 717.5.3 EXCEPTION 6
- SMOKE DAMPERS ARE NOT REQUIRED (UNLESS SHOWN ON FLOOR PLANS OR SCHEMATICS) AT PENETRATIONS OF RATED SHAFT ENCLOSURES WHERE THE BUILDING IS EQUIPPED THROUGHOUT WITH AN AUTOMATIC SPRINKLER SYSTEM IN ACCORDANCE WITH SECTION 903.3.1.1.

**PLAN NOTES**

- CAP DUCTWORK FOR FUTURE EXTENSION.
- ROUTE PIPING TO AVOID BEING OVERTOP OF ELECTRICAL EQUIPMENT. WHERE PIPING PASSES OVER ELECTRICAL EQUIPMENT, PROVIDE SECONDARY DRAIN PAN UNDERNEATH PIPING.
- DUCTWORK WITHIN ELEVATOR CONTROL ROOM SHALL BE 2-HOUR FIRE-WRAPPED.

**1 FIFTH FLOOR PLAN - HVAC**  
SCALE: 1/8" = 1'-0"



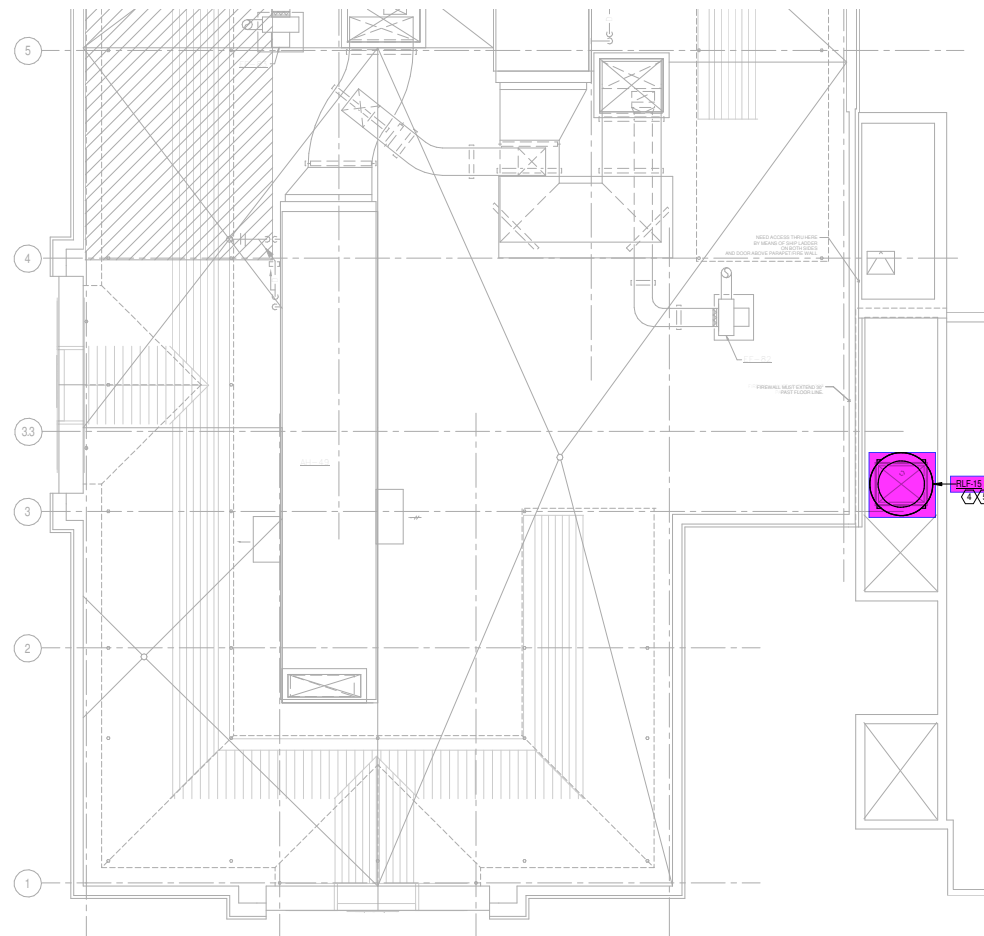
**GENERAL NOTES**

- A. FIRE BARRIERS - CBC 717.5.2 EXCEPTION 3 / FIRE PARTITIONS - CBC 717.5.4 EXCEPTION 4  
 FIRE DAMPERS ARE NOT REQUIRED (UNLESS SHOWN ON FLOOR PLANS OR SCHEMATICS) AT PENETRATIONS OF FIRE BARRIERS WHERE SUCH WALLS ARE PENETRATED BY DUCTED HVAC SYSTEMS, HAVING A REQUIRED FIRE RESISTANCE RATING OF 1 HOUR OR LESS IN AREAS OTHER THAN GROUP H AND ARE IN BUILDINGS EQUIPPED THROUGHOUT WITH AN AUTOMATIC SPRINKLER SYSTEM IN ACCORDANCE WITH SECTION 903.3.1.1 OR 903.3.2. HVAC SYSTEM SHALL BE CONSTRUCTED OF SHEET STEEL NOT LESS THAN 26 GAUGE. FLEXIBLE AIR CONNECTORS SHALL NOT BE PROHIBITED IN FULLY DUCTED SYSTEMS AT AIR HANDLING EQUIPMENT CONNECTIONS AND AT AIR CONNECTORS INSTALLATION TO CONNECT METAL DUCT TO A CEILING DIFFUSER AND IS LOCATED ENTIRELY WITHIN THE SAME ROOM AS THE CEILING DIFFUSER. THE FLEXIBLE AIR CONNECTOR SHALL NOT PASS THROUGH ANY WALLS, FLOORS, OR CEILING.
- B. SHAFT ENCLOSURES - CBC 717.5.3 EXCEPTION 6  
 SMOKE DAMPERS ARE NOT REQUIRED (UNLESS SHOWN ON FLOOR PLANS OR SCHEMATICS) AT PENETRATIONS OF RATED SHAFT ENCLOSURES WHERE THE BUILDING IS EQUIPPED THROUGHOUT WITH AN AUTOMATIC SPRINKLER SYSTEM IN ACCORDANCE WITH SECTION 903.3.1.1.

**PLAN NOTES**

1. STAIR PRESSURIZATION DUCTWORK SHALL BE 2-HOUR FIRE WRAPPED FROM FAN ROOM TO SHAFT PENETRATION.
2. EXTEND COOLING CONDENSATE TO FLOOR DRAIN IN MEDICAL VAC ROOM.
3. ROUTE PIPING TO AVOID OVERTOP OF ELECTRICAL EQUIPMENT. WHERE PIPING PASSES OVER ELECTRICAL EQUIPMENT, PROVIDE SECONDARY DRAIN FAN UNDERNEATH PIPING.
4. EXTEND COOLING CONDENSATE TO NEARBY FLOOR DRAIN.
5. PROVIDE TYPE 6 FIRE DAMPER AT FLOOR PENETRATION. ACCESS TO DAMPER SHALL BE FROM THE PENTHOUSE. COORDINATE APPROPRIATE ACCESS.
6. BOILERS' EMERGENCY SHUT-OFF WITH SIGNAGE.
7. ALL EXTERIOR PIPING SHALL BE HEAT TRACED PER THE SPECIFICATIONS.
8. 6" X 8" RELIEF LOUVER BY GC. PROVIDE RELIEF DAMPER FOR STAIRWELL PRESSURIZATION. REFER TO CONTROLS.
9. 6" X 8" EXHAUST LOUVER BY GC. PROVIDE INSULATED EXHAUST PLENUM FULL SIZE OF LOUVER.
10. 7'-4" X 4" INTAKE LOUVER BY GC. INSULATE STAIR PRESSURIZATION DUCTWORK THAT IS NOT FIRE WRAPPED.
11. MAINTAIN MINIMUM 15'-0" CLEARANCE FROM OUTSIDE AIR INTAKES TO ALL EXHAUST AIR OUTLETS AND PLUMBING VENTS.
12. MAINTAIN MINIMUM 25'-0" CLEARANCE FROM DISCHARGE OF ISOLATION EXHAUST TO OUTSIDE AIR INTAKES.
13. EXHAUST DUCTWORK FROM FLOOR BELOW INTO FAN INLET PLENUM. PROVIDE FIRE DAMPER AT FLOOR PENETRATION. ACCESS TO FIRE DAMPER SHALL BE FROM ACCESS DOOR ON INLET PLENUM. INSTALL BACKDRAFT DAMPER FOR FAN ON DISCHARGE OF FAN. DUCTWORK SHALL BE INSULATED DOWNSTREAM OF FAN UP TO PLENUM.
14. RELIEF AIR GRV FOR STAIRWELL. EXTEND DUCTWORK DOWN THRU ROOF FULL SIZE OF GRV CONNECTION. PROVIDE STAIRWELL RELIEF DAMPER IN DUCTWORK BELOW ROOF. REFER TO CONTROLS.

**1 ROOF PLAN - HVAC**  
 SCALE: 1/8" = 1'-0"



**PLAN NOTES**

1. PROVIDE DIFFERENTIAL PRESSURE SENSOR IN WALL ABOVE DOOR OF MECHANICAL ROOM FOR CONTROL OF RLF-15. REFER TO CONTROLS.
2. EXISTING RELIEF AIR DAMPER FOR AIR HANDLING UNITS 15 & 16 IN MECHANICAL ROOM. RLF-15 SHALL BE INTERLOCKED WITH DAMPER, SO THAT THE FAN DOES NOT START UNTIL DAMPER IS OPEN.
3. REMOVE EXISTING RELIEF AIR DUCTWORK AND CURB FROM ROOF. EXISTING OPENING SHALL BE MODIFIED FOR NEW FAN.
4. PROVIDE NEW RELIEF FAN AND CURB. EXTEND DUCTWORK FULL SIZE OF FAN CONNECTION DOWN THRU ROOF INTO RELIEF AIR SHAFT. MODIFY EXISTING OPENING AS REQUIRED FOR NEW DUCTWORK.
5. LOCATE VFD FOR RLF-15 IN 4TH FLOOR ELECTRICAL ROOM BELOW. REFER TO ELECTRICAL DRAWINGS.

**3 FIFTH FLOOR PLAN - EXISTING ROOF NEW WORK**  
SCALE: 1/8" = 1'-0"